



Wendover Close Harpenden, AL5 5SH

Well presented four-bedroom, end of terrace home of circa 1,258 sq ft with open plan living space in a peaceful, central spot. Benefiting from a private rear garden and driveway. Within walking distance of the town centre and station and ideally located for excellent schooling.

Guide price £725,000

Wendover Close

Harpenden, AL5 5SH



- Well presented end of terrace home
- Open plan living
- Within walking distance to Town centre & station
- Four bedrooms
- Private rear garden
- Well placed for excellent schooling
- Circa 1,258 sq ft
- Driveway
- Council Tax Band E

Entrance Hall

Cloakroom

Utility Room

6'10" x 5'9" (2.10 x 1.76)

Kitchen

18'0" x 6'5" (5.50 x 1.96)

Dining/Family Room

25'8" x 17'11" (7.83 x 5.48)

Landing

Bedroom One

15'2" x 10'2" (4.64 x 3.10)

En-suite with shower

Bedroom Two

10'0" x 9'6" (3.06 x 2.92)

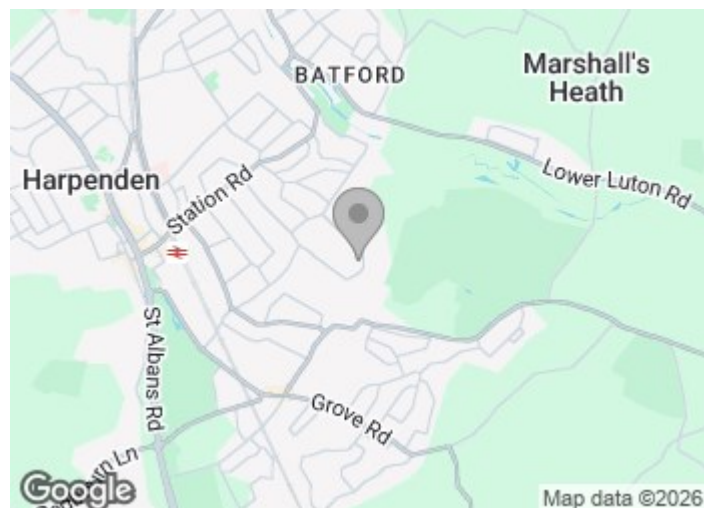
Bedroom Three

10'0" x 8'0" (3.06 x 2.46)

Bedroom Four

8'11" x 8'9" (2.72 x 2.67)

Bathroom

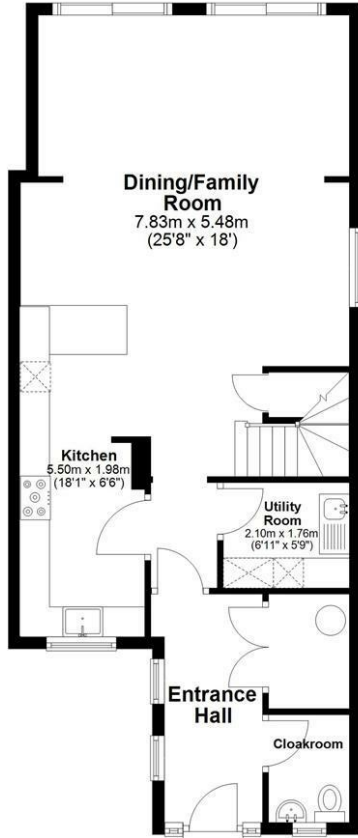




Floor Plan

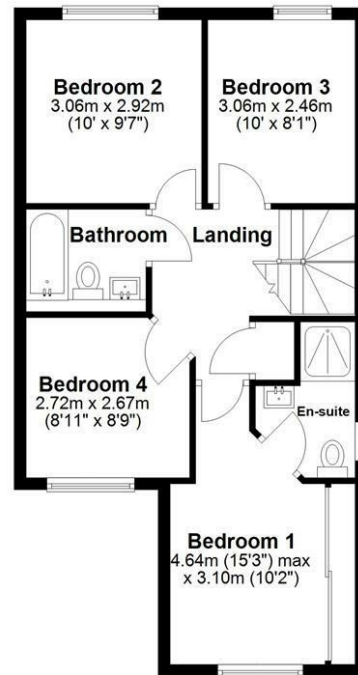
Ground Floor

Approx. 65.5 sq. metres (705.2 sq. feet)



First Floor

Approx. 51.4 sq. metres (553.5 sq. feet)



Total area: approx. 116.9 sq. metres (1258.7 sq. feet)

Sketch layout only. Not to scale. Plan produced for Whittaker & Co.

Plan produced using PlanUp.

These particulars, whilst believed to be accurate are set out as a general outline only for guidance and do not constitute any part of an offer or contract. Intending purchasers should not rely on them as statements of representation of fact, but must satisfy themselves by inspection or otherwise as to their accuracy. No person in this firm's employment has the authority to make or give any representation or warranty in respect of the property.

